

NAV-Z1014

MID-RANGE ZOOM ACCESSORY LENS

FOR SONY 4K VPL-GTZ380 SXR D PROJECTOR

The NAV-Z1014 mid-range zoom lens combined with the SONY 4K VPL-GTZ380 SXR D projector is the ideal solution for multi-channel digital projection layouts.

For planetariums, the projection angles and throw ratios allow for an 8 to 10 projector arrangement, or the creation of a hybrid dome where the digital projectors are used in combination with an opto-mechanical star projector. This configuration allows the digital projection system to work in combination with the star ball system without shadowing. Blending this many native 4K projectors into a single dome will achieve 8K fulldome resolution that can surely impress audiences.

In simulation, this lens is ideal for motion platforms with high fidelity cockpit display systems ensuring high pixel density and accurate immersive training. For night scenes and night vision goggle training, the lens was designed to be compatible with the additional infrared laser package offered on the GTZ380 platform.

NAV-Z1014 LENS FEATURES

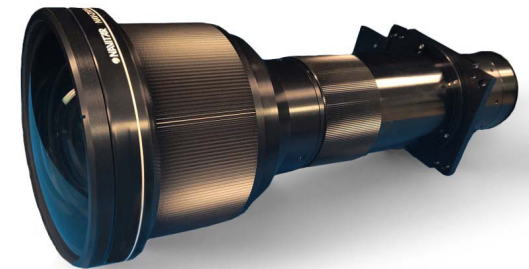
- Mid-range zoom lens with throw ratio of 1.0 – 1.4:1
- Lens shift of +/- 50% vertical and +/- 18% horizontal
- Optimized for external blend plates and masks
- Internal focus and zoom mechanism
- Infrared night vision simulation compatible
- 4K resolution optical system, F/2.9
- Extra low dispersion (ELD) glass elements
- High dynamic contrast
- Optical design optimized for brightness and color
- Excellent focus center to edge
- Proprietary lens coatings to maximize contrast and transmission

APPLICATIONS

PLANETARIUM
SIMULATION
AMUSEMENT
MUSEUM
CURVED SCREEN

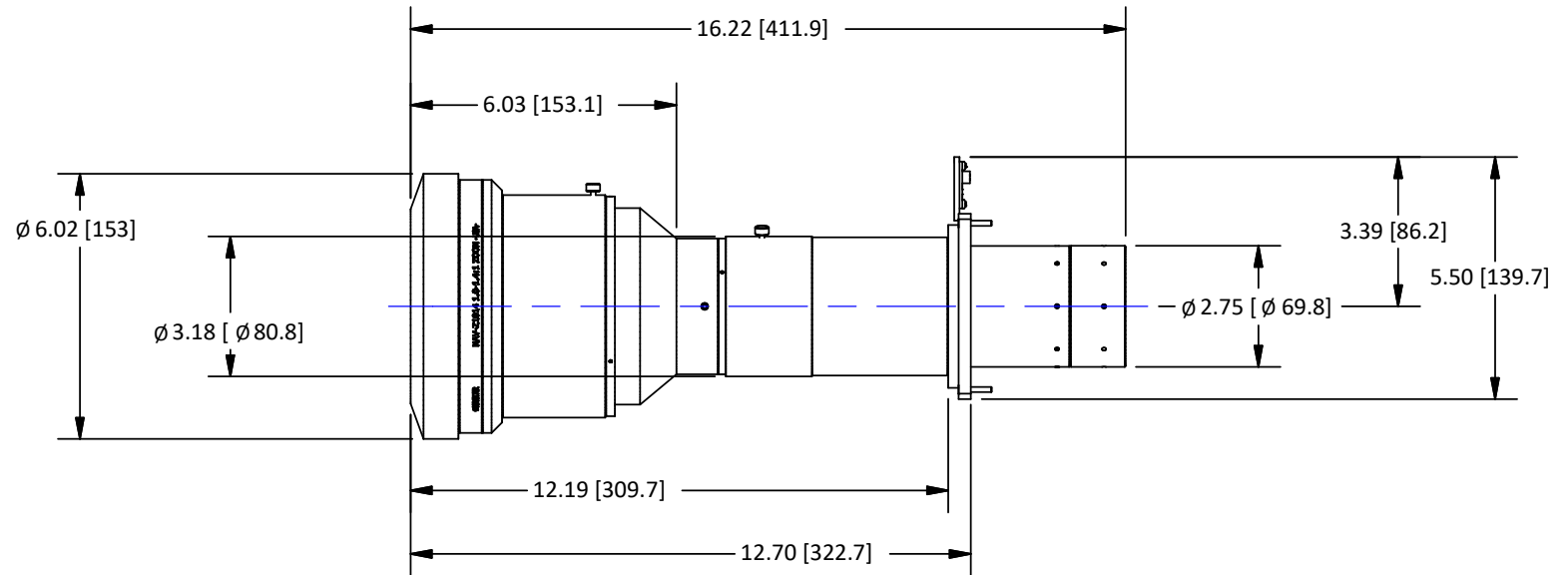
MULTI-CHANNEL DIGITAL PROJECTION SOLUTION

NAV-Z1014
1.0 - 1.4:1 THROW RATIO LENS
AND
SONY VPL-GTZ380
4K SXR D LASER PROJECTOR

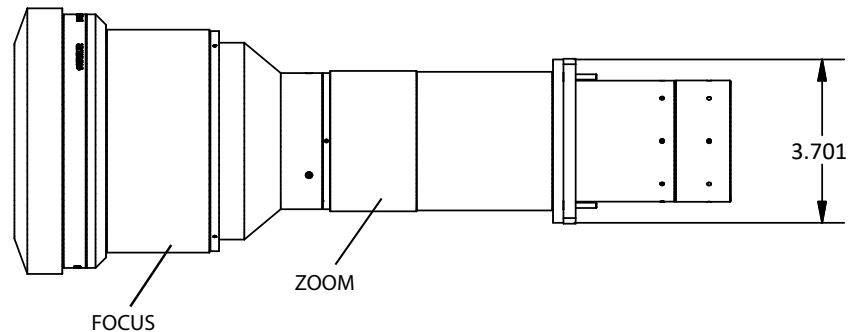


NAV-Z1014 FOR SONY VPL-GTZ380

MID-RANGE ZOOM ACCESSORY LENS FROM NAVITAR



PROJECTION LENS	NAV-Z1014
Throw ratio	1 - 1.4:1
Throw Distance	2 - 30 m
Focal Length	16.6 - 23.2 mm
F-Number	f/2.9-3.5
Image Shift	50% of full vertical
Image Circle Radius	12.1 mm
Visible Transmission	80%
IR Transmission	74%



SPECIFICATION	VALUE AT THROW RATIO		
	1.0:1	1.2:1	1.4:1
Lateral Color, R-G	< 0.29	< 0.30	< 0.25
Lateral Color, B-G	< 0.20	< 0.16	< 0.24
Maximum Distortion	-5.0%	-4.6%	-3.7%

PROJECTOR	SONY VPL-GTZ380
Resolution	4096 x 2160 pixels
Pixel Pitch	4.05 um
Panel Dimensions	16.589 x 8.748 mm
Back Focus - Glass	46.435 mm
Back Focus - Air	46.099 mm

NAV-Z1014
1.0 - 1.4:1 ZOOM



PROPRIETARY AND CONFIDENTIAL
THE INFORMATION CONTAINED IN THIS DRAWING IS THE SOLE
PROPERTY OF NAVITAR. ANY REPRODUCTION IN PART OR AS A WHOLE
WITHOUT THE WRITTEN PERMISSION OF NAVITAR IS PROHIBITED.