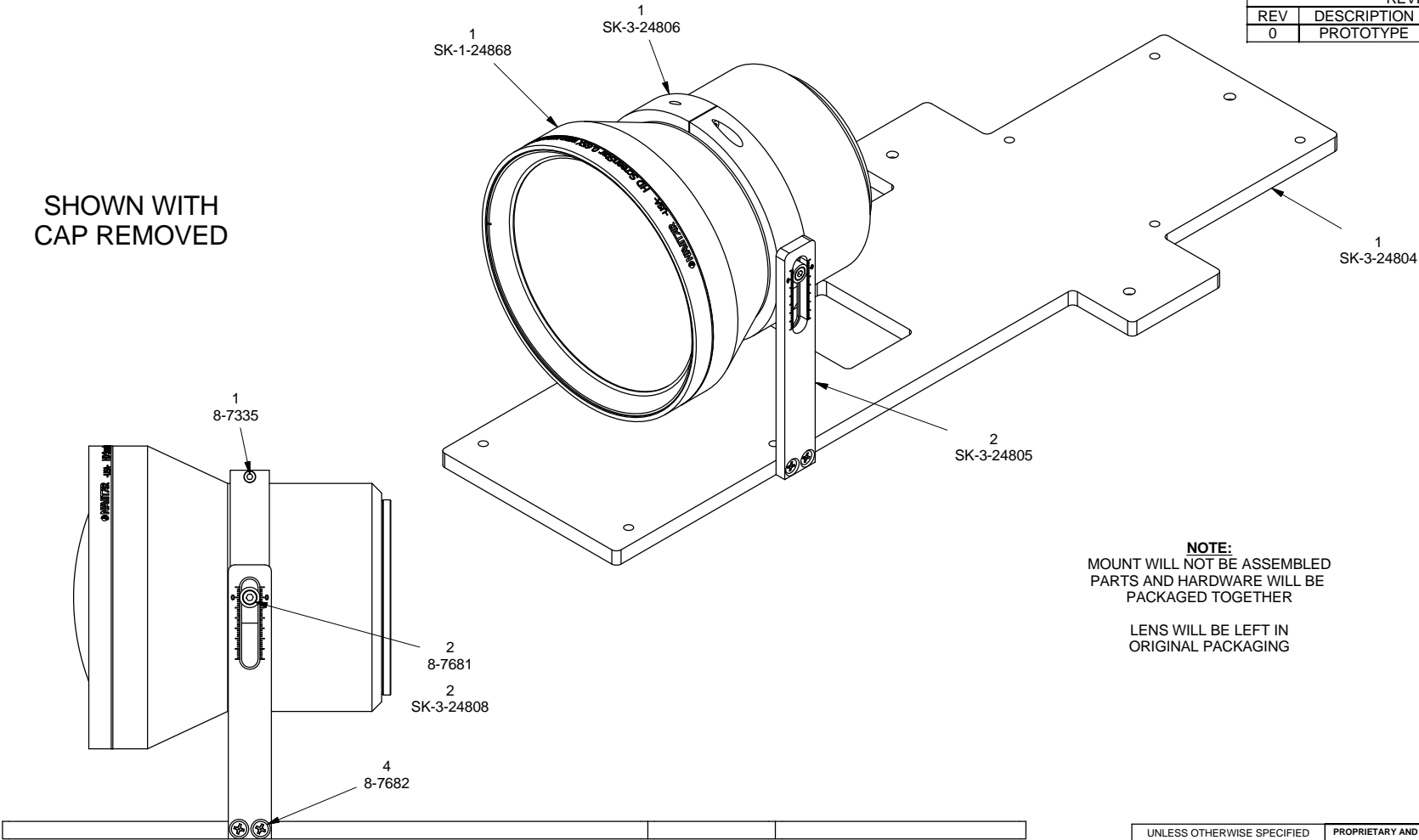




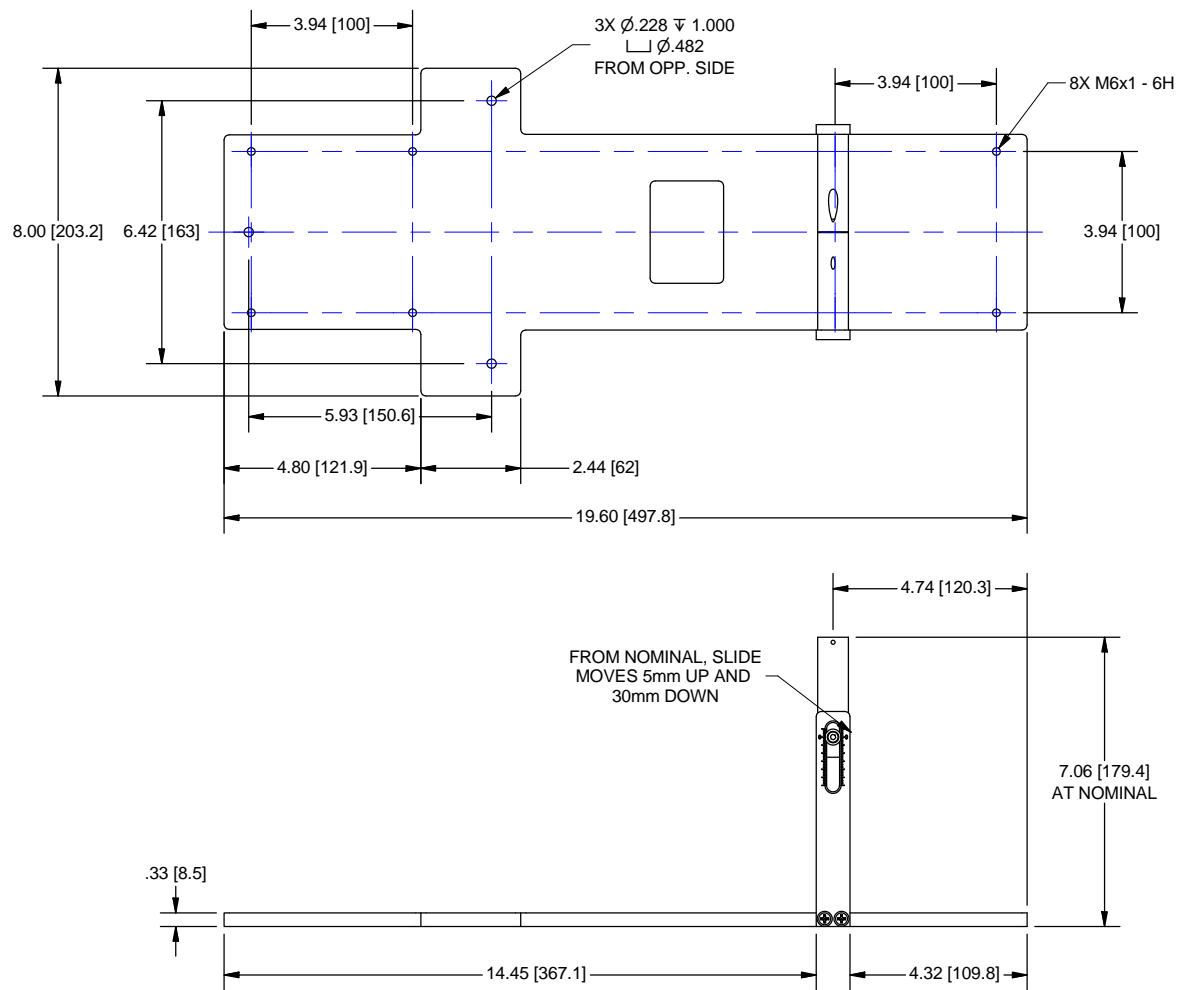
REVISION HISTORY				
REV	DESCRIPTION	DATE	DR BY	CH BY
0	PROTOTYPE	08/14/2014	CJH	BJC

SHOWN WITH  
CAP REMOVED



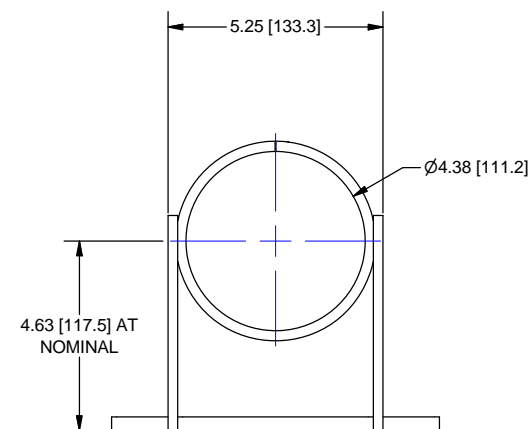
Parts List			
UCFS	QTY	PART #	DESCRIPTION
	1	7-30743	BOX, 20 X 8 X 4
	1	SK-1-24868	SCREEN STAR, HD, 0.65X, GT-100
	1	SK-3-24804	MOUNT, PLATE, GT-100
	2	SK-3-24805	MOUNT, SLIDE, GT-100
	1	SK-3-24806	MOUNT, COLLAR, GT-100
	2	SK-3-24808	GUIDE PIN
UCFS	1	8-7335	M3-0.5x10, SS304, SCREW, SHC
UCFS	2	8-7681	M4-0.7x6, SS304, SCREW, SHC, FP, HEX
UCFS	4	8-7682	M4-0.7x12, SS316, SCREW, FH, FP, PHLP

UNLESS OTHERWISE SPECIFIED DIMENSIONS ARE IN INCHES AND INCLUDE CHEMICALLY APPLIED OR PLATED FINISHES		<b>PROPRIETARY AND CONFIDENTIAL</b> <small>THE INFORMATION CONTAINED IN THIS DRAWING IS THE SOLE PROPERTY OF NAVITAR. ANY REPRODUCTION IN PART OR AS A WHOLE WITHOUT THE WRITTEN PERMISSION OF NAVITAR IS PROHIBITED.</small>	
SCALE:	1:2	 ROCHESTER, NEW YORK	
WEIGHT:	13.23 lbmass		
DR BY:	C. HATCH	MOUNT, ASSEMBLY, GT-100	
CH BY:	BJC		
PROJECT #:	E3220		
DATE DR:	06/27/2014	SIZE <b>B</b> <b>SK-1-24803</b> SHEET 1 OF 4	
DO NOT SCALE DRAWING			
			REV <b>0</b>


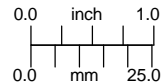
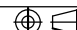


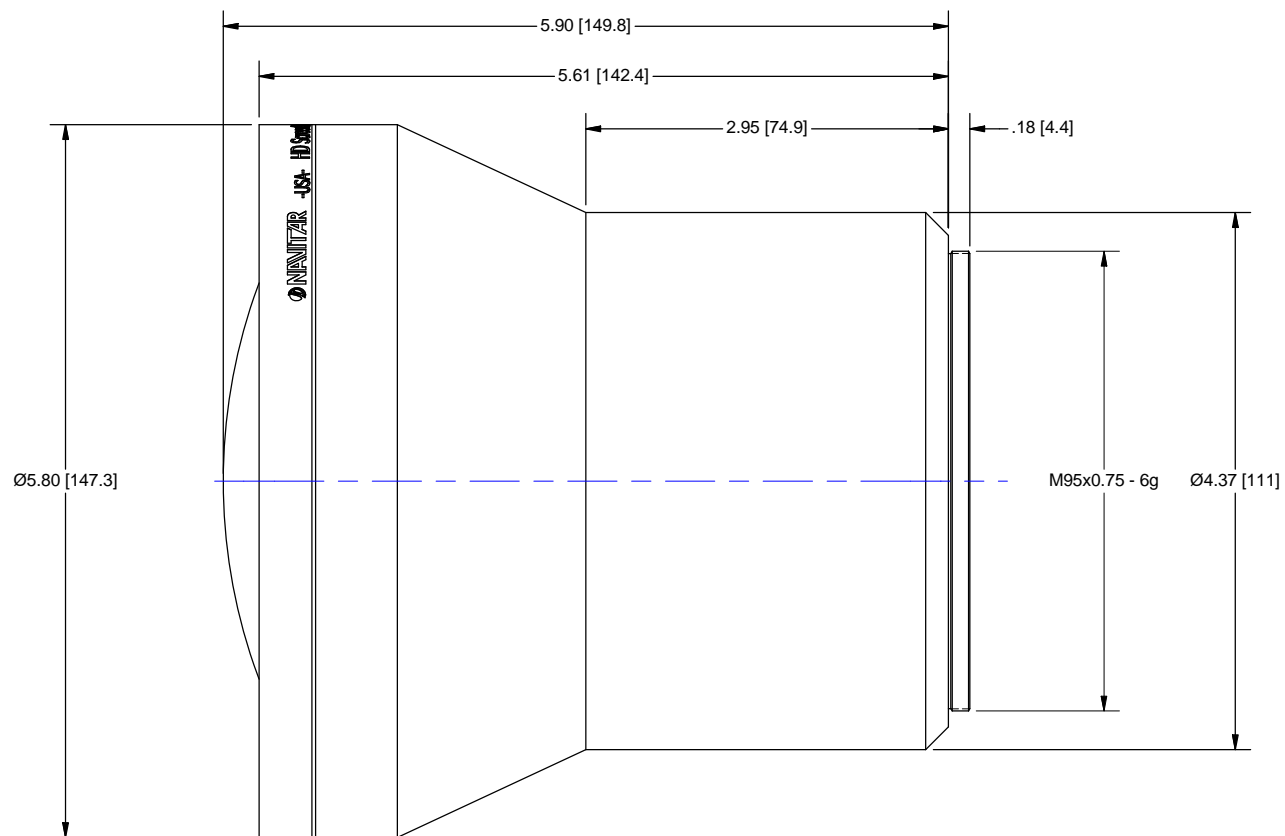
SCALE 1 / 3

SHOWN WITHOUT LENS



OUTLINE

UNLESS OTHERWISE SPECIFIED DIMENSIONS ARE IN INCHES [MM] AND INCLUDE CHEMICALLY APPLIED OR PLATED FINISHES		PROPRIETARY AND CONFIDENTIAL  THE INFORMATION CONTAINED IN THIS DRAWING IS THE SOLE PROPERTY OF NAVITAR. ANY REPRODUCTION IN PART OR AS A WHOLE WITHOUT THE WRITTEN PERMISSION OF NAVITAR IS PROHIBITED.		 ROCHESTER, NEW YORK	
SCALE:	1:2			MOUNT, ASSEMBLY, GT-100	
WEIGHT:	13.23 lbmass	DO NOT SCALE DRAWING			
DR BY:	C. HATCH			SIZE	SK-1-24803 SHEET 2 OF 4
CH BY:	BJC			B	
PROJECT #:	E3220	DATE DR: 06/27/2014			


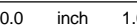
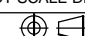


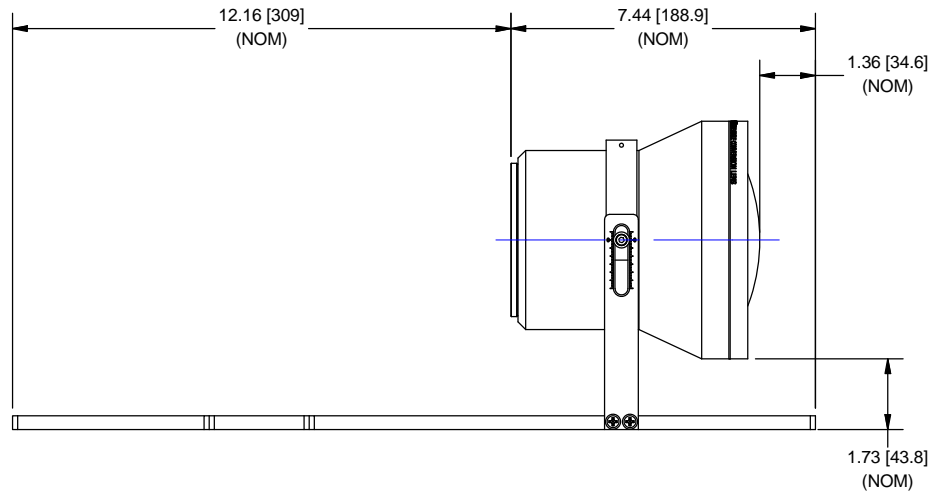
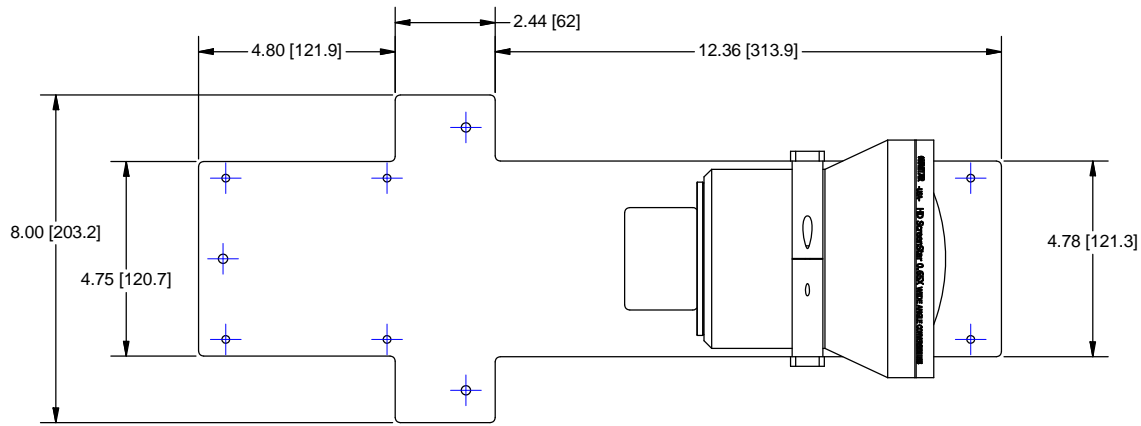
LENS ONLY  
SHOWN WITH REMOVABLE  
MOUNTING BRACKET  
REMOVED

SCALE 1 : 1

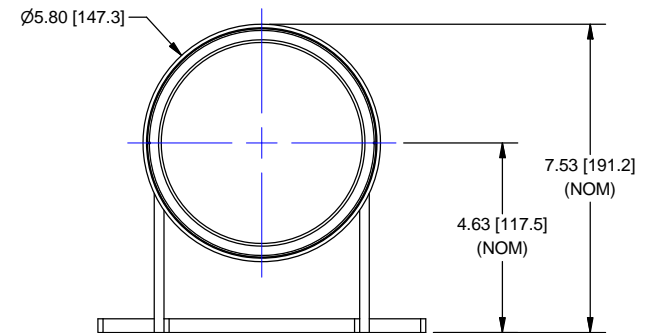
OUTLINE

AFOCAL MAGNIFICATION = 0.6499X  
PRIME LENS FOCAL LENGTH = 44.0 mm  
PRIME LENS F-NUMBER = 1.80  
OBJECT AT INFINITY  
IMAGE DIAGONAL = 29.0 mm (1.142 inches)  
EXIT PUPIL DISTANCE = 70.0 mm  
EXIT PUPIL DIAMETER = 24.468 mm


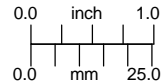
UNLESS OTHERWISE SPECIFIED DIMENSIONS ARE IN INCHES [MM] AND INCLUDE CHEMICALLY APPLIED OR PLATED FINISHES		PROPRIETARY AND CONFIDENTIAL  THE INFORMATION CONTAINED IN THIS DRAWING IS THE SOLE PROPERTY OF NAVITAR. ANY REPRODUCTION IN PART OR AS A WHOLE WITHOUT THE WRITTEN PERMISSION OF NAVITAR IS PROHIBITED.		 ROCHESTER, NEW YORK			
SCALE:	1:2	<div>0.0      inch      1.0</div> <div></div> <div>0.0      mm      25.0</div>		SCREEN STAR, HD, 0.65X, GT-100			
WEIGHT:	9.62 lbmass	DO NOT SCALE DRAWING		SIZE B	SK-1-24868 SHEET 3 OF 4		
DR BY:	C. HATCH						
CH BY:	BJC						
PROJECT #:	E3220						
DATE DR:	08/29/2014				REV 0		



SCALE 1 / 3



OUTLINE

UNLESS OTHERWISE SPECIFIED DIMENSIONS ARE IN INCHES [MM] AND INCLUDE CHEMICALLY APPLIED OR PLATED FINISHES		PROPRIETARY AND CONFIDENTIAL  THE INFORMATION CONTAINED IN THIS DRAWING IS THE SOLE PROPERTY OF NAVITAR. ANY REPRODUCTION IN PART OR AS A WHOLE WITHOUT THE WRITTEN PERMISSION OF NAVITAR IS PROHIBITED.		 ROCHESTER, NEW YORK		
SCALE: 1:2				MOUNT, ASSEMBLY, GT-100		
WEIGHT: 13.23 lbmass						
DR BY: C. HATCH						
CH BY: BJC						
PROJECT #: E3220						
DATE DR: 06/27/2014		DO NOT SCALE DRAWING		SIZE B	SK-1-24803 SHEET 4 OF 4	REV 0
		