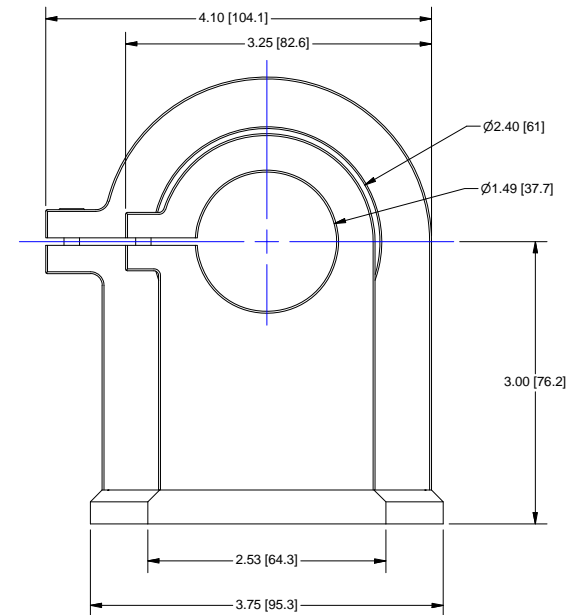
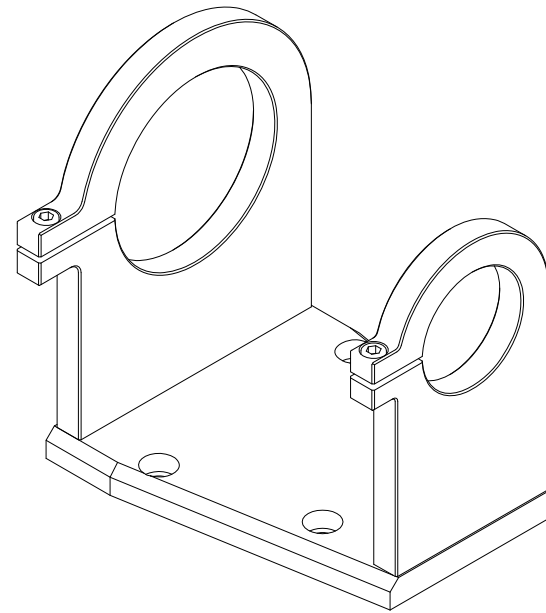



**NOTE:**  
M6-1 X 16 BOLTS PROTRUDE  
.506" [12.85mm] BELOW BOTTOM  
SURFACE



## OUTLINE

UNLESS OTHERWISE SPECIFIED DIMENSIONS ARE IN INCHES AND INCLUDE CHEMICALLY APPLIED OR PLATED FINISHES		PROPRIETARY AND CONFIDENTIAL THE INFORMATION CONTAINED IN THIS DRAWING IS THE SOLE PROPERTY OF NAVITAR. ANY REPRODUCTION IN PART OR AS A WHOLE WITHOUT THE WRITTEN PERMISSION OF NAVITAR IS PROHIBITED.	
SCALE:	1:1	 ROCHESTER, NEW YORK	
WEIGHT:	1.17 lbmass		
DR BY:	CJH	MOUNT, .243X TELECENTRIC LENS	
CH BY:	BJC		
PROJECT #:	E3102	SIZE <b>C</b> <b>1-23783</b> REV <b>B</b> SHEET 2 OF 2	
DATE DR:	7/18/2013		
DO NOT SCALE DRAWING	